

TEACH PENDANT

HTF Series



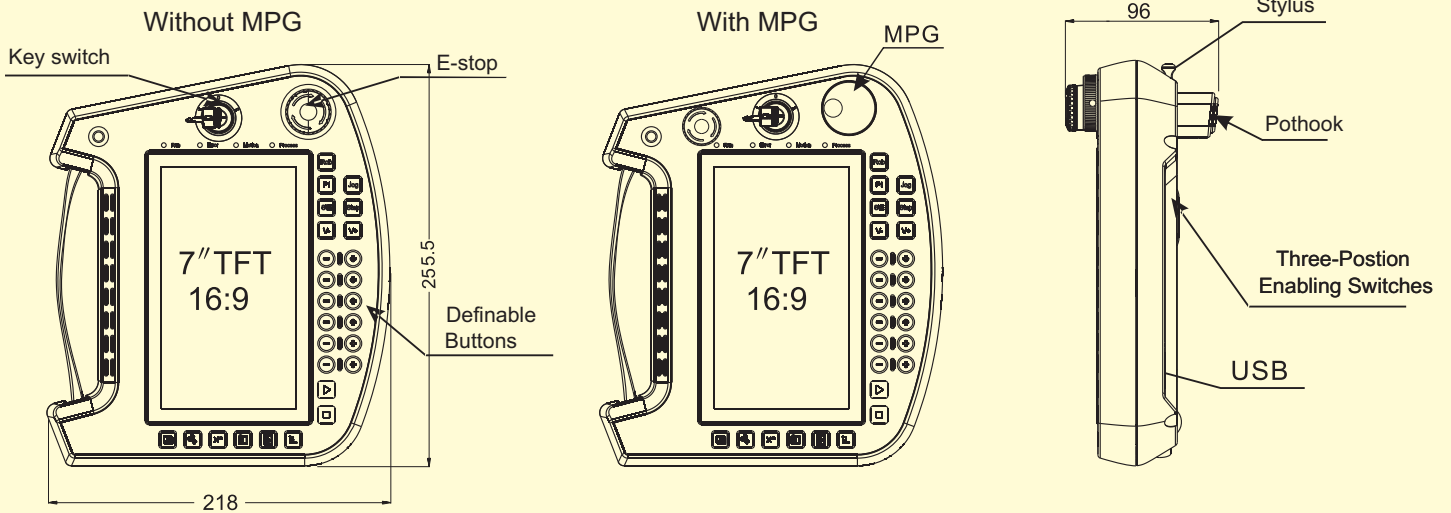
● Teach Pendant

Model.

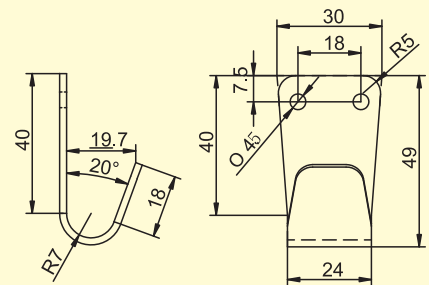
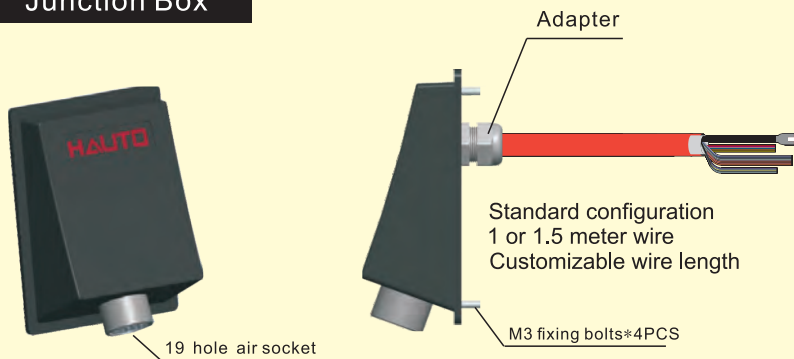
HTF - X X X X - X X X - X

System software type		MPG/E-Stop		Membrane key		Key switch		Communication		Line length		The safety switch		Cover color/Pedestal	
A	Android	0	NONE/INC	0	Without	0	Without	1	Ethernet	A	Wireless	0	Without	1	Black-Without Pedestal
B	LINUX QT4	1	MPG(5V)/1NC	1	With	1	Customized	2	232	B	3 meters (network)	5	One 3 position (enabling)	2	Black-With Pedestal
C	WINCE7.0	2	MPG(24V)/1NC	2	Customized	2	Tow position	3	485 (422)	C	5 meters (network)			3	Coal grey Without Pedestal
H	Configuration	5	NONE/2NC			3	Three position	4	CAN	D	7 meters (network)			4	Coal grey-With Pedestal
L	LINUX QT5									E	10 meters (network)				
V	WNC									F	15 meters (network)				
											Can be customized				

External Dimension.



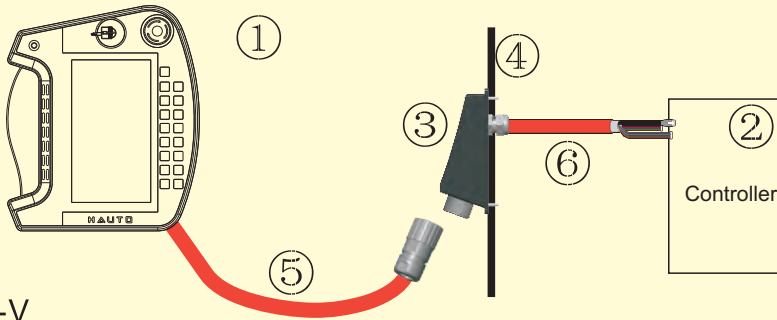
Junction Box



TP Pedestal

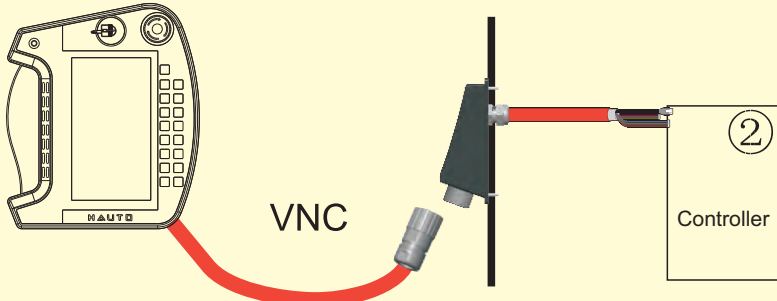
connection

HTF-A/B/C/H/L



①	HTF
②	Controller
③	Junction Box
④	Control cabinet
⑤	Connection cable
⑥	Transmits cable

HTF-V



- 1.Alternative VGA display function.
- 2.Through the Gigabit network to achieve remote display and control, strong anti-interference ability
- 3.Can achieve the overall control of the machine screen and any part of the display on the teaching.
- 4.Remote display and control of cross platform.

产品特性 characteristics

Processor	TiAM335X32-bit RISC,Cortex-A8 800MHz	URT
Memory/Nand	512MB/Nand 512MB	
Processor	Freescale Cortex-A9 i.MX6Q 1GHz	URT
Memory/Nand	2GB/Nand 16GB	
Micro SD card	Support extension 4G Max16G	
LCD	TFT 8inch 800 * 600 / 1024*768	
Touch	Ruggedized and 4-wire touch resistive touchscreen	
O/S	Window s CE 7.0 Core / LINUX 3.2 / Android	
USB External USB Device	2.0 * 1	
Membrane key	key ≥31个 (ea) pilot lamp : 4个 (ea) Customizable	
Communication	RS232, RS485, CAN, Ethernet (100M/1G)	
Parts	Emergency stop key switch Enable switch (three-position) Pulse 50PPR	
Common Specification	Protection Grade : IP40~IP65	
	Case : ABS/PC, Black color / Coal gray	
	Input Voltage : DC 24V	

Lighting surge ±4KV

Group pulse ±4KV

Static contact ±6KV

Air discharge ±6KV

Pass the 1 meter
drop test

Certified by CE

线缆 Cable



RoHS MeetRoHS	Power and signal line	Netting twine
Project	A:2Cx24AWG/12Cx26AWG	B:2Px25AWG(0.20mm2)
Cable diameter	8.0 ±0.30mm	
Electrical performance	The mechanical and physical properties	
1.Rated temperature: 80℃ 2.Rated voltage: 30V 3.Max impedance: 95Ω/km 4.Withstanding voltage: 0.5kV/min	Bending resistance, oil resistant, flame retardant, drag resistance	